

foodmailer® 2020 Assembly instructions



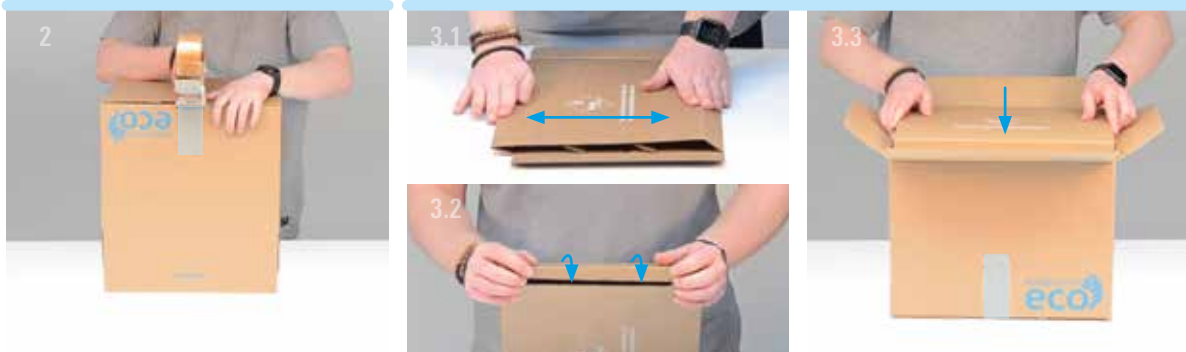
1. Set up the outer box of the foodmailer®



2. Seal the bottom with package tape



3. Spread over the cover & base part, erect and insert



4. Set up the insulation ring, press firmly and insert



5. Insert the cover & base part



6. Seal the cover with package tape



You can find assembly instructions here in the video.